

# *The McCurdy*

The Highlands of Chelsea



*The McCurdy*  
5 Bed – 3.5 Bath  
2609 SQFT

# The McCurdy's Standard Features

## **Building Standards:**

- Slab on grade concrete foundation
- Traditional stick framing methods
- Framed "Green Corners" for higher energy efficiency
- Engineered AdvanTech Sub Floor
- Eco friendly Sentricon Termite Bait Station
- Studs, ceiling joists, and rafters will be 24" on center

## **Exterior Features:**

- Hardie Lap siding, Board and Batten siding & Masonry brick exterior
- 30 Year Dimensional Architectural Roof Shingles & Metal Roof
- Exposed rafter tails
- Double Hung, double paned, high efficiency, Low E glass, wood clad windows
- Fiberglass front door & locking system
- \$15,000 Landscaping Allowance
- 2 Car Garage

## **Interior Features:**

- 9' smooth ceilings throughout first floor & second floor
- Open cell R20 Spray Foam installed on roof deck
- Traditional R13 Batt/Fiberglass Insulation installed in the exterior walls (draft stopping measures to seal Insulation)
- Tankless gas water heater
- Gas furnace HVAC system
- Wood burning fireplace with 5' tall brick surround and hearth & shaker style mantle

## **Interior Finishes:**

### *Design Features*

- 6" Baseboards & cased windows throughout
- Recessed lighting throughout kitchen, living room, dining room & master bedroom
- Wire shelving installed in all closets, pantry & laundry areas
- Interior walls primed & painted with Sherwin Williams® Super Paint. Includes two wall colors, one trim color & one ceiling color

### *Flooring*

- Hardwood flooring will be installed in all first floor common areas, powder bathroom, & laundry room.
- Ceramic tile in all full bathrooms
- Carpet in all bedrooms, closets, & any other rooms

### *Kitchen*

- Custom designed wooden cabinets in kitchen & bathrooms
- Granite countertops throughout
- Stainless Steel appliances by Whirlpool®, including the dishwasher, gas range & microwave
- Chrome Delta® Kitchen Fixtures
- Stainless Steel undermount sink in kitchen
- Tile backsplash in kitchen

### *Bathrooms*

- Tile shower with waterproofing system in the master bathroom
- Chrome Delta® Bath Fixtures
- Large double vanity in master bathroom with under-mount sink
- Vanity mirrors
- High quality fiberglass tub/ shower in all other bathrooms

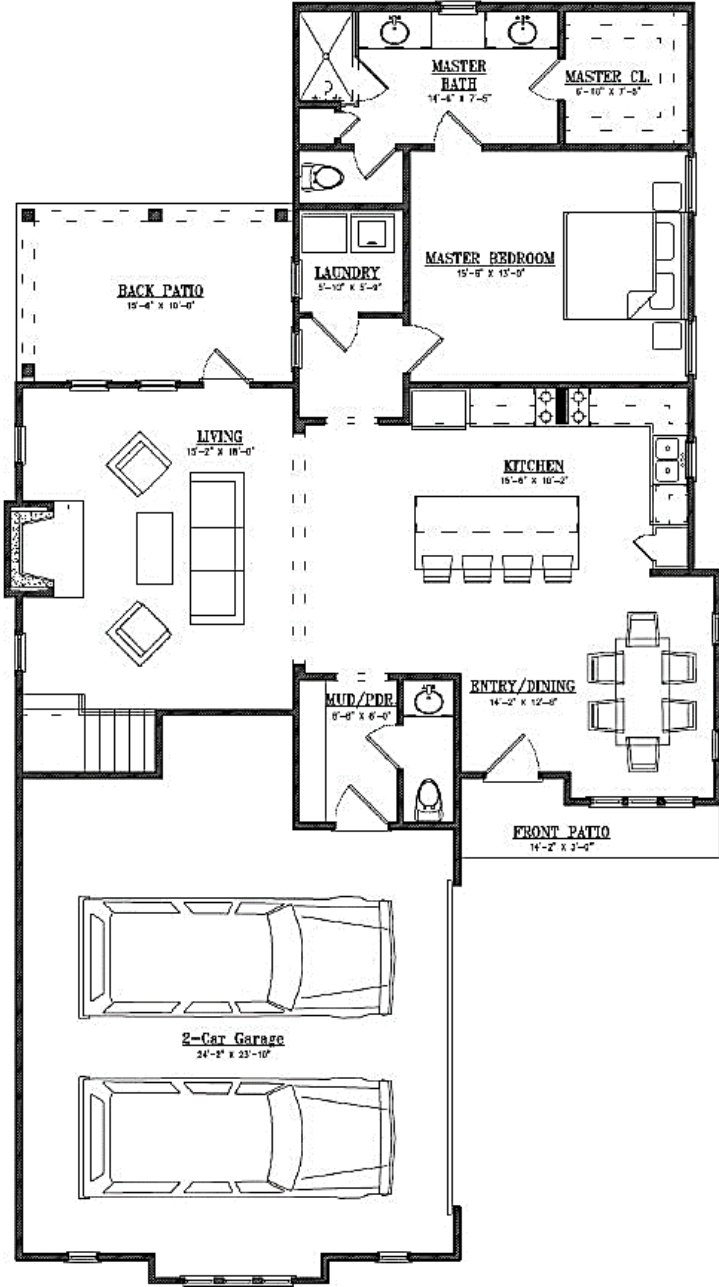
### *Bedrooms*

- All Bedrooms will have ceiling fans

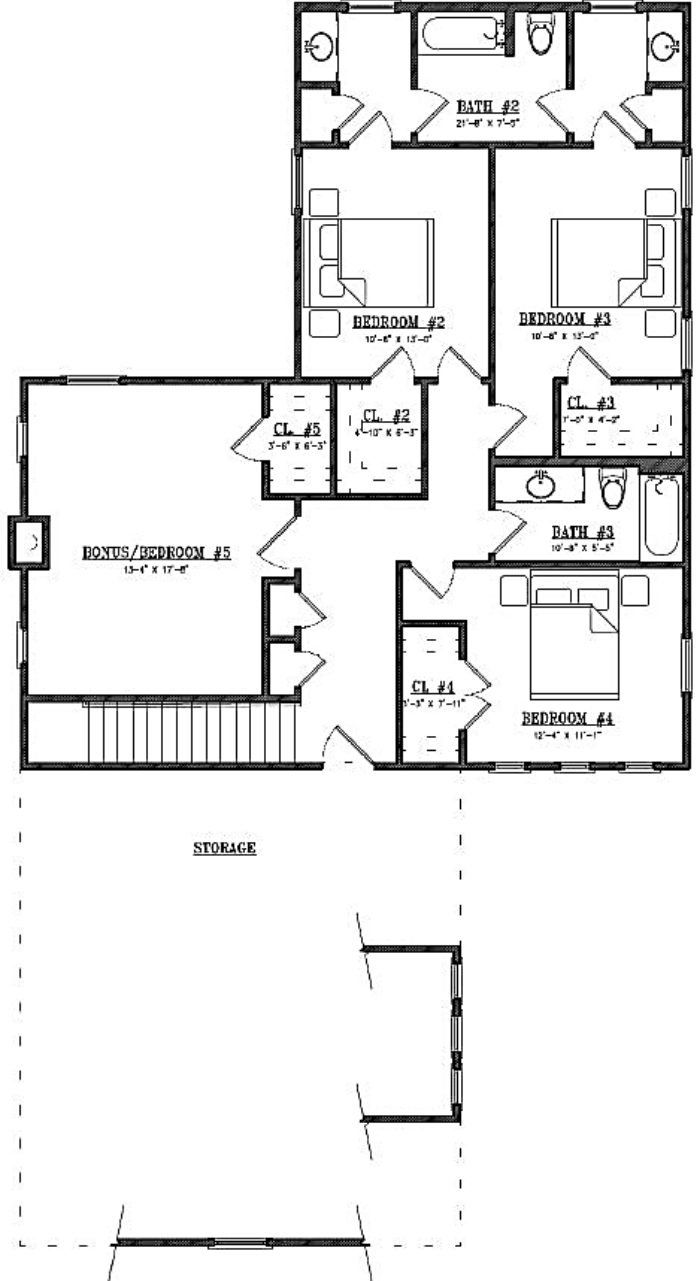
Customizing isn't complicated! Upgraded finish options are available for our standard finishes. We have all of our upgrade options, details, and pricing available for you in our Design Guide. View the link below to access it!

[www.hollandhomesllc.com/process/design-guide](http://www.hollandhomesllc.com/process/design-guide)

# MAIN LEVEL



# UPPER LEVEL





# THE HIGHLANDS *of Chelsea*



"Building Reputations"

[www.HollandHomesllc.com](http://www.HollandHomesllc.com)

**(334) 332-7157**

THE ELEVATION AND FLOOR PLANS CONTAINED HEREIN ARE NOT TO SCALE AND ARE GRAPHIC ILLUSTRATIONS FOR MARKETING AND PRESENTATION PURPOSES ONLY. ACTUAL FLOOR PLANS AND ALL MATERIALS MAY VARY PRIOR TO OR DURING CONSTRUCTION. SOME FEATURES SHOWN MAY BE OPTIONAL. HOLLAND HOMES RESERVES THE RIGHT TO SUBSTITUTE MATERIALS AND COMPONENTS OF SIMILAR QUALITY, AND TO CHANGE FEATURES, OPTIONS, AND ARCHITECTURAL DETAILS WITHOUT PRIOR NOTICE. ACCORDINGLY, NEITHER THESE MATERIALS, NOR ANY COMMUNICATION MADE OR GIVEN IN CONNECTION WITH THESE MATERIALS, MAY BE DEEMED TO CONSTITUTE ANY REPRESENTATION OF WARRANTY, CONTRACT OR GUARANTEE OR MAY OTHERWISE BE RELIED UPON BY ANY PERSON OR ENTITY UNLESS CONVEYED IN WRITTEN FORM. THIS MARKETING INFORMATION AND PLAN ARE PROPERTY OF HOLLAND HOMES.